

Connect

News from your Federation

July 2023

If you have anything you'd like to see included in the next issue, please send it to us at: comms@boltongpfed.co.uk

Bringing health to the high street

Bolton Health Hive
Local healthcare on your high street

We opened Bolton Health Hive on 29 April, a new clinic that has been set up to deliver vaccines and support Bolton people with their health needs.

Following the success of the Covid vaccination clinic in Bolton Market Place, and to provide support and additional capacity to GP practices, the new clinic is located at a new unit at 9b Market Place (the former Gregg's store adjacent to H Samuel).

The Hive provides much-needed additional space for primary care services in Bolton, at a time when practices are struggling to find additional room within their own buildings.

Federation Interim Chair, **Dr Kamran Khan**, said: "The Health Hive has been created to support our GP practices and to help Bolton people access important health services and support in a convenient location.

"We have worked very closely with our communities to understand some of the inequalities that they face around accessing health services, and the Hive is here to help remove some of those barriers. This includes providing services from a place that is easily accessible, at a time that is convenient without the need for an appointment, with trusted health professionals who have time to chat to people to alleviate concerns or nervousness.

"We're excited to create a real buzz around the Hive, and to see how the services we offer can grow further by working with our partners and understanding more about what people need from the Hive. If things go well, we will work with our Primary Care Networks, partners and our communities to open up other Health Hive sites across Bolton."

Initially, the Hive is open Monday to Friday, 10am to 4pm. Why not pop by and say hi!



**BOLTON
GPFEDERATION**
Supporting and Shaping Local Communities

We launched our refreshed logo this month. Do you like it?



Health Hive stats

In the first seven weeks of being open we have delivered:

134 health checks **1,829** covid vaccines

and made

12 referrals to GP **10** referrals to pharmacy

Patients have fed back what they liked most about their visit:

- Caring and welcoming
- Quick and efficient
- Efficient and friendly
- Friendly
- Pleasant
- Helpful, useful advice
- No waiting
- Great staff

100% of patients said they would recommend the Hive to friends and family.



New Chair and Vice Chair



**Dr Kamran Khan,
Chair**

Following the retirement of founder Chair, Dr George Ogden in March, we are delighted to introduce our new interim Chair and Vice Chair.

Bolton GPs **Dr Kamran Khan** (Unsworth Group Practice in Westhoughton and Blackrod) and **Dr Saveena Ghaie** (Garnet Fold Practice in Rumworth) have been appointed as interim Chair and Vice Chair respectively. They have both served previously on the board as Vice Chair and Quality Lead.

Dr Khan said: "Our main focus will be on helping to improve the health and wellbeing of Bolton people. We aim to do this by supporting GP practices, Primary Care Networks and our wider healthcare system partners, including building on our strong links to the voluntary and community sector.

"Growing and training the primary and social care workforce is also a priority for us, and we are extremely fortunate to be involved in the running of the Greater Manchester Training Hub with the GM Feds collaborative.

"The federation team will continue to look at ways to share good practice and learn from each other in primary care and provide an avenue for our partner organisations to gain a better understanding of general practice, hopefully helping develop to a more cohesive system for Boltonians."



**Dr Saveena Ghaie,
Vice Chair**

Social prescribers out and about in the community

Air Fryer Course – funded by Onward Homes

Our Social Prescribers, Julie and Alison, ran a four week course on air frying (four sessions in total) for 16 people at the John Holt Centre in Westhoughton.

The idea behind the course was to support people to eat healthier for less whilst also getting out of the house and combatting social isolation.

The team did live demonstrations, shared recipes and top-tips and all attendees got an information file to take away.

The highlight each week was the blind taste test, which involved tasting 'big brands' vs supermarket own label items – attendees have made money saving swaps following the taste tests.

The feedback from the course was amazing!



"Easy to follow and understand, I've loved every minute of the course and met new people that I could, and will, call friends."

"Lots of good ideas and tips. I had a great time, it was fun. I received some good advice and met lovely people in a relaxed atmosphere."

"I would definitely recommend this course, especially with Julie and Alison."



"I have learnt something new at each session. For me this course has helped my confidence socially as well as teaching me new skills. It has opened a lot of doors."

Your Federation, working to tackle health inequalities

Social prescribers out and about in the community

Menopause event – funded by our Health Inequalities Project

A menopause information event for all women (not just those registered with our surgeries) was held at Blackrod Cricket Club on 9 May.

The event was advertised at local GP practices, social media, local shops and the local Women's Institute.

It was anticipated that there would be around 40 attendees. In actual fact there were 66 women who attended the event.

Dr Bev Matta and **Dr Julie Hall** gave a talk on peri-menopause and menopause and then held a question and answer session.

Goodie bags were given to all attendees that included information about symptoms and how to get the most from your GP appointment.

As part of our evaluation of the event, every single woman gave the event a 5-star rating!

Some quotes from the evaluation forms can be seen opposite and below:

"You are never too old to ask for advice on this subject."

"I enjoyed seeing / hearing from lots of other women expressing similar issues."

"I enjoyed all of it – very informative and I liked the interaction and "frankness" of both Dr Matta and Dr Hall."

"The speakers were very well educated and knowledgeable on the subject."

Most enjoyable part: "The Honesty"

"I enjoyed the way that it wasn't just factual, there was fun and laughter in it, which made it more interesting."

Green Arts

Our Green Arts steering group is a collaboration between social prescribers from Chorley Roads and Rumworth PCNs and Bolton GP Federation.

The aim is to develop a range of activities and groups to provide support across the areas and the many diverse communities by offering time, space and knowledge.

Green Arts works in collaboration with the following services:

- The Woodland Trust
- The Wildlife Trust
- Bolton College
- CAHN (Caribbean and African Health Network)
- Bolton Cares
- Healthwatch



Our people in the spotlight



Matthew Mann,
Operational Delivery Manager
for Greater Manchester
Training Hub

I'm Matthew, the Operational Delivery Manager for Greater Manchester Training Hub (GMTH). I have worked within the NHS for around 13 years. My role in Bolton GP Federation has grown significantly since I joined five years ago as a Practice Manager looking after a GP surgery. From Practice Manager, I then became a Primary Care Network (PCN) manager when PCNs were created in July 2019, moving on to be the Senior PCN Manager for the seven PCNs we support. In November 2022, I joined the GMTH side of the business. My passion has always been workforce and developing the workforce. My team supports learners across all areas of primary care and we are starting to move into social care. I'm eager to provide the best service we can to support and upskill the workforce to allow us to provide the best care for Bolton people. In my spare time, I have a static caravan in the lake district which I can be found at most weekends with my partner and my dogs (Poppy and Dotty). I love to hike up the fells and I am mad about animals!

Matthew can be contacted at: matthew.mann@boltongpfed.co.uk



Lyndsay Bailey,
Nurse Lead
for Bolton GP Federation

Lyndsay is our GP Nurse Lead. Her role includes managing an experienced network of nursing staff in supporting primary care across Bolton. She also supports GMTH and provides support to new learners and new-to-practice nurses across Greater Manchester. She is also a cervical cytology assessor and supports clinical staff with immunisation and vaccination.

Lyndsay started her career as a receptionist in a GP practice, progressed to Health Care Assistant within 12 months of employment and then completed her nursing degree in 2017. She worked at Bolton Hospital for 12 months in the orthopedic Trauma Unit before becoming a Practice Nurse.

Her desire is to provide all patients and their families with care of the highest standard and her hope is to standardise care throughout primary care to ensure equality for all patients.

Lyndsay can be contacted at: lyndsay.bailey@boltongpfed.co.uk



Heather Porter,
Network Manager

Heather is Network Manager for Halliwell Primary Care Network (PCN). She has been a part of the federation team since February 2021, joining whilst on furlough from her HR advisor job. During this time, she supported various functions including operations and performance during the pandemic.

Heather's role as a Network Manager varies day-to-day, but she thrives on working with peers, employees and shareholders to support the needs of the PCN and patient population. The team is busy working towards meeting our contractual requirements and tackling neighbourhood health inequalities.

During her spare time Heather enjoys walking, gym classes and eating out with her family. She previously lived and worked in Dubai, and hopes to return for a holiday soon with her family.

Heather can be contacted at: heather.porter@boltongpfed.co.uk

Enhanced Access

In April we offered more than **3,500** additional general practice appointments via our seven Enhanced Access hub sites.

Mental health

Live webinars

Kooth is a free, safe and anonymous online mental wellbeing community for people aged 11–25.

Qwell is a free, safe and anonymous online mental health support service for adults, available 24/7.

Kooth and Qwell offer a range of features and support tools.

For professionals supporting young people and adults, Kooth are running free webinars that explain how Kooth and Qwell can offer support to your patients:



How Kooth and Qwell can support Maternal Mental Health

Wednesday 12 July, 4–5pm

Tuesday 18 July, 10–11am

How Kooth & Qwell Can Support Male Mental Health

Monday 21 August, 4–5pm

You can view the bank of past webinars on topics such as 'How Kooth and Qwell can Support Neurodiverse and SEND Users' here: <https://vimeo.com/user191837918>



Bolton Living Well



Bolton Living Well is a relatively new community service in Bolton. The main focus is mental health and wellbeing. Their partners are **Family Action BAND** who have a number of staff working in the service.

The team have different skills and backgrounds and consists of peer support workers, mental health nurses, administrator, social worker, psychiatrist, trainee associate psychological practitioners, recovery worker and a recovery coordinator.

The team are currently working in Farnworth and Kearsley, Rumworth, Central and Breighmet and Little Lever Primary Care Networks. The aim is to cover the whole of Bolton by April 2024.

They have been successfully working with social prescribers, mental health practitioners, GPs, voluntary and third sector organisations and other mental health services in Bolton.

The team are recovery focused and work to people's strengths. Collaboration is at the heart of the service.

For further information please contact: 01204 483050.



News from across Greater Manchester

Greater Manchester Training Hub (GMTH)

Bolton GP Federation is the lead employer for GMTH, and our staff have been busy providing essential training and development opportunities for the primary and social care workforce across Bolton and Greater Manchester.

Click to play



Hear more from Chris Lewis about ILM accreditation

ILM accreditation for GMTH

After an incredible amount of hard work, the Greater Manchester Training Hub is now an ILM-approved organisation.

What does this mean?

This credential is issued to organisations who have met the requirements for the global quality benchmark 'ILM Assured' and confirms that GMTH has world-class systems and processes in place to design, deliver and maintain leadership and management programmes.

For more information on GMTH and the programmes they run, visit www.gmthub.co.uk

Bolton GP Fed becomes accredited Clinical Learning Environment

We are delighted to announce that Bolton GP Federation has become an accredited Clinical Learning Environment (CLE).

Becoming a CLE means working with local education providers to develop a skilled and effective workforce that meets the health needs of Bolton people, now and in the future.

There are lots of benefits to becoming a CLE. With the support of the Greater Manchester Training Hub, we will:

- Raise our profile of expertise.
- Attract and retain staff with the right values to aid recruitment.
- Receive training and support to support learners on placement.
- Receive a tariff payment for each pre-registration placement that we provide.
- Be supported by the GMTH team of Clinical Education Specialists.
- Be able to develop our team through opportunities for staff to engage in critical inquiry and implement evidence-based practice.
- Enable staff to evidence continuing professional development.
- Enhance interprofessional relationships.
- Celebrate the success achieved through collaborative working.



The GMTH ambition is that all primary care services become a Clinical Learning Environment to enable all learners to gain the experience of working within primary care. Upon qualification and dependent on their placement experience, we want to encourage learners to choose primary care as their preferred place of employment.

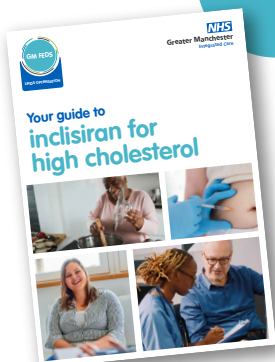
If you're interested in becoming a CLE you will get full support from the GMTH team to complete all the required processes and documentation. To find out more contact GMTH@GMFeds.co.uk

News from across Greater Manchester

GM Feds

GM Feds is a collaboration of GP Federations that have a strong track record of providing primary care support and services across Greater Manchester, including Bolton, Bury, Manchester, Oldham, Rochdale, Salford, Stockport, Tameside, Trafford and Wigan.

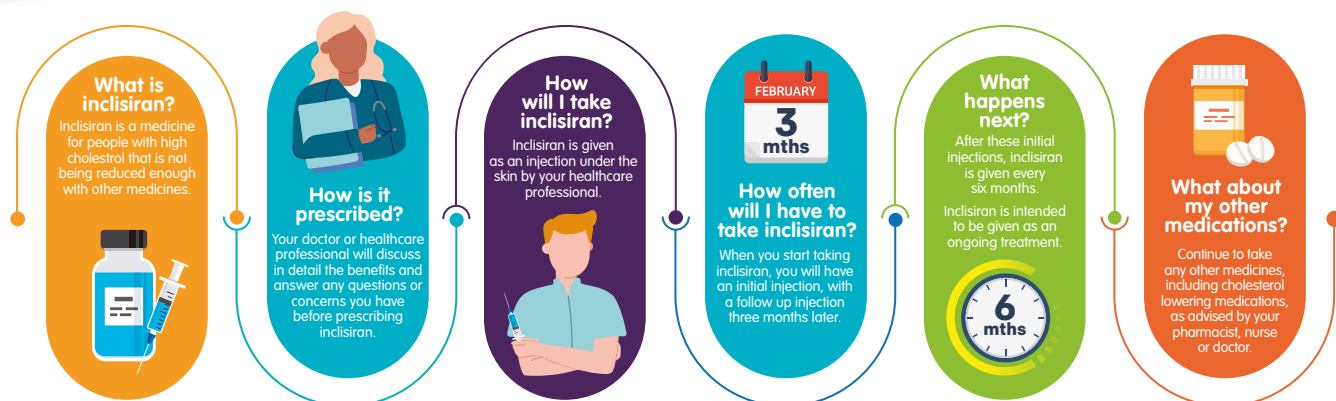
GM Feds rolls out new cholesterol-reducing therapy in Bolton



GM Feds, in partnership with NHS GM and Health Innovation Manchester, rolled out a brand new programme in Bolton in June to help people manage their cholesterol and reduce their risk of heart attack and stroke.

The inclisiran programme is a ground-breaking and large-scale targeted programme that identifies people whose high cholesterol is not being reduced enough with other medicines. The treatment is by injection and is currently available at the Bolton GP Federation Health Hive in Market Place, via invitation.

For more info on the services run by GM Feds, visit www.gmfeds.org



GM Workforce Bank

Are you...

A **GP** looking for **extra shifts**?

A **practice** in need of **GPs**?



GM Workforce Bank is quick and easy to sign up to.

Benefits to practices include -

- Free to use.
- Direct payments to staff members for the shift worked.
- Dedicated support, responding within 24 working hours.

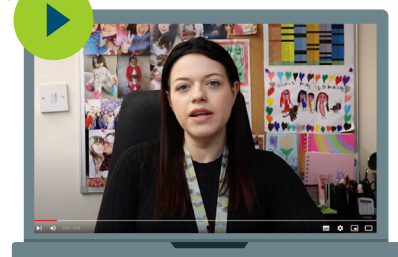
Benefits for GPs -

- Pick the shifts and locations that fit around you.
- Free and easy to register.

Register now at gmworkforcebank.co.uk



Find out how using the GM Workforce Bank can help you...



Good news in our community

Blackrod Sports and Community Centre

Blackrod Sports and Community Centre has received funding from The National Lottery Community Fund.

They have been awarded £169,888 from the National Lottery Community Fund to help them support their communities in Bolton West and the surrounding area.

The project will help to educate and empower through support and guidance local people to make positive life choices based on knowledge and experience rather than fear, isolation and ignorance. The project will actively seek to involve as many local people into health lifestyle sessions. They will work with local people in blackrod, horwich and westhoughton of all ages on our programmes to improve people's health and wellbeing, educational attainment and employability by developing confidence, life skills and resilience.

It will more than double their activities across seven days a week and double their health, wellbeing and lifestyles staff for the next three years.

This is the largest grant they have received and will allow them to fulfil the commitment they made when they took over the building from Bolton Council as a Community Asset Transfer in 2017.



Distinction for Graeme King



Our Interim Vice Chair, Saveena, presented **Graeme King** (Primary Care Network Pharmacist) with a special award for not only being the first Advanced Clinical Practitioner to be put through the ACP course by us, but for also passing with a distinction.

Well done Graeme, from all the team at Bolton GP Federation!

Are you a local voluntary or community group with a health-related good news story you'd like to share? Please send to comms@boltongpfed.co.uk

If you would like any of your messages elevating or stories sharing please send them through to comms@boltongpfed.co.uk



Twitter
[@boltongpfed](https://twitter.com/boltongpfed)



Facebook
[@boltongpfederation](https://facebook.com/boltongpfederation)



LinkedIn
[@boltongpfed](https://linkedin.com/company/boltongpfed)